

Other Benelec High Frequency Antennas



Omnidirectional Antenna for 1.8 GHz to 2.4 GHz



8dBi Swivel Patch Antenna for 2.4GHz



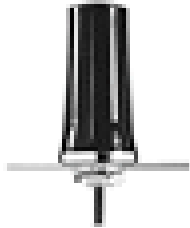
Button Patch Antenna for 2.4GHz to 5.8GHz



Magnetic Mount Antenna for 1.7GHz to 2.4GHz



5dBi Body Mount Antenna for 2.4GHz



2.5dBi Body Mount Antenna for 2.4GHz



Portable Device Antenna for 1.7GHz to 5.8GHz



Omnidirectional Antenna for 3.5GHz to 5.8GHz

Corner Reflector Series Site Antennas Installation Instructions



Warranty

Benelec, (Seller) warrants to buyer that the products for a period of two years from the date of shipment will be free from defects of material and workmanship, and will be in accordance with specifications referred to herein. Seller's sole obligation under these warranties will be limited to either, at Seller's option and expense, repairing, or furnishing a replacement F.O.B. first point of shipment for the products or part thereof which Seller reasonably determines do not conform with these warranties, and Buyer's exclusive remedy of breach of any of such warranties will be enforcement of such obligations of Seller. THE FOREGOING WARRANTIES ARE EXCLUSIVE AND IN LIEU OF ALL OTHER WARRANTIES OF MERCHANTABILITY, FITNESS FOR PURPOSE AND OF ANY OTHER TYPE, WHETHER EXPRESSED OR IMPLIED. IN NO EVENT SHALL SELLER BE LIABLE FOR SEQUENTIAL DAMAGES, nor shall Seller's liability on any claims for damages arising out of or connected with the sales contract or the manufacture, sale, delivery or use of the products exceed the purchase price of the products. Any action for breach of warranty must be commenced within two years after the cause of action accrues.

Models Include:

02493, 029306 & 029404

Note: This manual may cover more than one antenna. Please use the instructions that pertain to the type that you are installing. Some instructions apply to all types. Models vary in appearance

Thank you for choosing Benelec as your choice of communication antennas. The following instructions will guide you to the best possible performance of your antenna of choice.

Choosing a Mounting Location

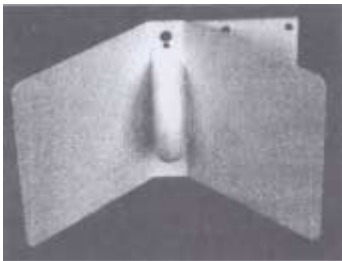
The Corner Reflector Series antennas are designed to give a directional pattern. In order to achieve this, the antenna should be mounted clear of any obstructions to the front of the radiating element.

Mounting The Antenna

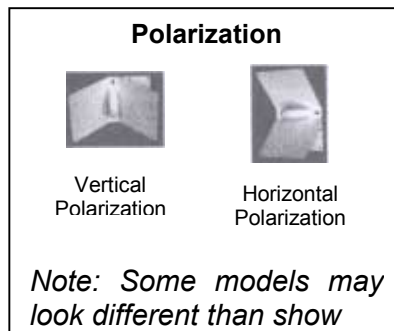
The Corner Reflector Series antennas are directional antennas. Thus, make sure that the radiating element is pointed in the actual direction of the receive or transmit equipment being used with the selected system.

The Corner Reflector Series antennas are provided with a mounting kit. This kit allows you to mount the antenna to mast up to 5 cm in diameter.

The Corner Reflector Series antennas can be mounted to accommodate vertical or horizontal polarization.



The above picture shows how the Corner Reflector should be mounted to achieve vertical polarization



To achieve horizontal polarization, rotate the antenna 90 degrees to right or left. (See above)

Note: The mounting kit supplied will accommodate both horizontal and vertical mounting options.

To mount the antenna to a desired mast, insert both 6 cm U-bolts through the holes in the mounting plate. Each U-bolt is equipped with a pair of the following: washers, primary nut and lock nut. Place the mounting plate in the desired location on the mast, attach the washers, primary nuts and lock nuts in the same manner as described above and tighten.

Note: Although the Corner Reflector is a DC grounded antenna, you may wish to install additional lightning protection.

Suggested Cable Requirements

It is recommended to use a high quality low loss cable.

Note: The higher the frequency, the higher the loss through the cable. Also, the longer the run, the higher the loss.

The Corner Reflector Series antennas terminate with a type N female connector. The mating connector to the antenna is a type N male connector. The connector on the opposite end will vary according to the type of equipment being used.

After the cable is attached to the antenna, it is recommended to make sure that the connections are sealed to prevent moisture and other weathering elements from affecting the performance of the antenna.

The final step is to attach the required connector to mate with the equipment to be used at the opposite end of the cable. Once this is complete, make the connection and your corner Reflector Series antenna is ready for use.