

Other Benelec High Frequency Antennas



Omni Directional Antenna for 1.8 GHz to 2.4 GHz



8dBi Swivel Patch Antenna for 2.4GHz



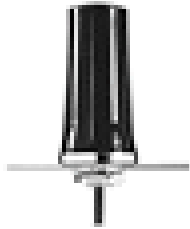
Corner Reflector 9dBi



Magnetic Mount Antenna for 1.7GHz to 2.4GHz



5dBi Body Mount Antenna for 2.4GHz



2.5dBi Body Mount Antenna for 2.4GHz



Corner Reflector 14dBi



Omni Directional Antenna for 3.5GHz to 5.8GHz

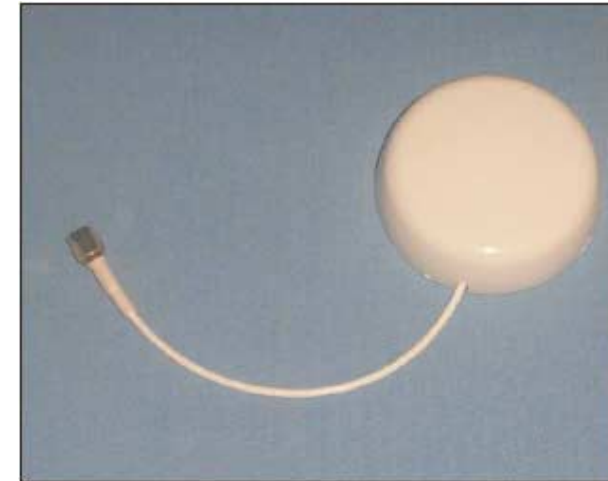
Warranty

Benelec, (Seller) warrants to buyer that the products for a period of two years from the date of shipment will be free from defects of material and workmanship, and will be in accordance with specifications referred to herein. Seller's sole obligation under these warranties will be limited to either, at Seller's option and expense, repairing, or furnishing a replacement F.O.B. first point of shipment for the products or part thereof which Seller reasonably determines do not conform with these warranties, and Buyer's exclusive remedy of breach of any of such warranties will be enforcement of such obligations of Seller. THE FOREGOING WARRANTIES ARE EXCLUSIVE AND IN LIEU OF ALL OTHER WARRANTIES OF MERCHANTABILITY, FITNESS FOR PURPOSE AND OF ANY OTHER TYPE, WHETHER EXPRESSED OR IMPLIED. IN NO EVENT SHALL SELLER BE LIABLE FOR SEQUENTIAL DAMAGES, nor shall Seller's liability on any claims for damages arising out of or connected with the sales contract or the manufacture, sale, delivery or use of the products exceed the purchase price of the products. Any action for breach of warranty must be commenced within two years after the cause of action accrues.

BENELEC

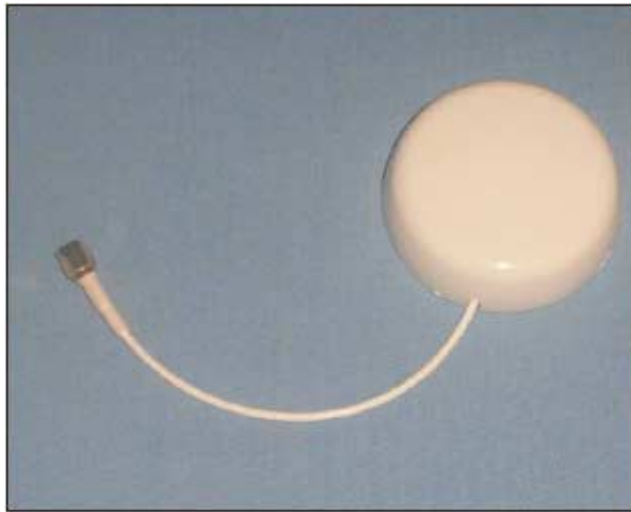
Professional Wireless Products

Button Patch Antennas Installation Instructions



**Models Include:
029309 & 029403**

Note: This manual may cover more than one antenna. Please use the instructions that pertain to the type that you are installing. Some instructions apply to all types. Models vary in appearance



The Button Patch Series is designed to give a directional pattern. In order to achieve this, the antenna should be mounted clear of any obstructions from the front and sides. The antenna will need to be properly positioned towards the other communication site or coverage area. The antenna is supplied with double-sided tape on the backside for mounting purposes. This tape allows you to mount the antenna to any flat surface.

The antenna is vertically polarized. It is **IMPORTANT** to mount the antenna with the cable positioned so that it points either straight upward or straight downward. After the mounting location is decided, peel the backing from the double-sided tape and press the antenna firmly onto the flat vertical surface.

You can now attach the RF cable from your transceiver to your antenna. The antenna comes with a SMA Plug connector as standard. The mating connector is a SMA Jack. It is recommended to use a high quality low loss cable. Finally, make sure the RF cable is securely fastened separate from the antenna. Otherwise the antenna will not be able to hold the weight.