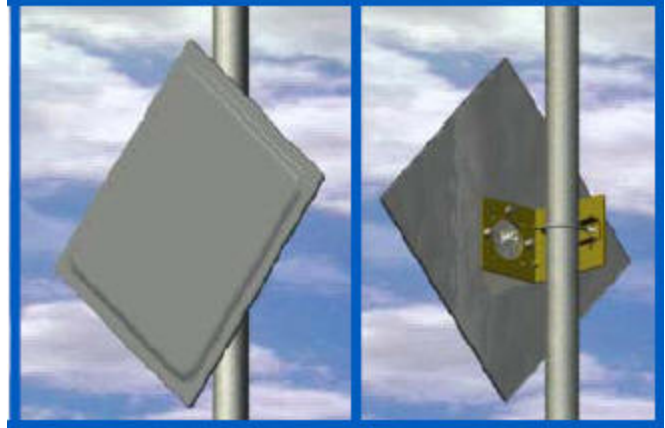


Model: 029405

ISM 5.15 - 5.875GHz 23dBi Directional Panel Antenna

Features

- High Gain technology
- High Performance and well priced
- Meets ETSI TS1-TS5 Range 1 Specifications
- Very Low Profile, Lightweight Construction



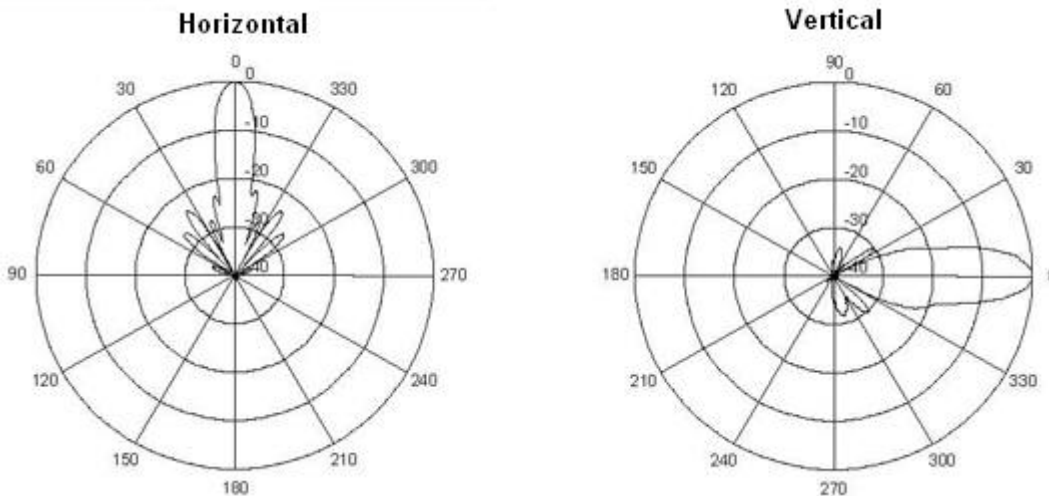
Electrical Specifications

Model	Frequency (GHz)	Gain dBi	Polarization	VSWR	Front-to-Back Ratio	Cross Polarization	Beamwidth Ver / Hor	Power Handling	Lighting Protector
029405	5.15-5.875	23.0	Vertical	≤ 1.7:1	>40dB	>30dB	10° / 10°	30W	DC Ground

Mechanical and Environmental Specifications

Model	Size L x W x D	Weight max	Connector	Radome	Wind Survivability	Wind Load	Operating Temp	Bracket Mounting Kit
029405	33.5cm x 33.5cm x 1cm	0.91kg	Type N, Female	Gray UV Stabilized ABS Plastic	201.2kph	0.11m ²	-45°C to +50°C	Included

Typical Antenna Patterns



Interface Dimensions (Inches)

