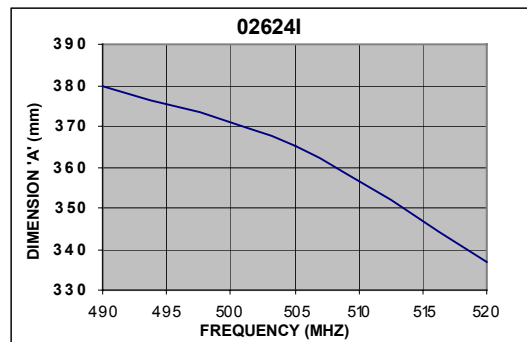
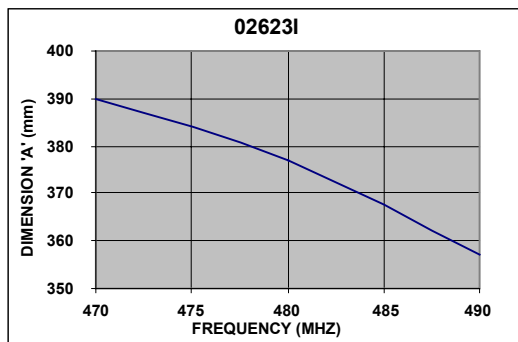
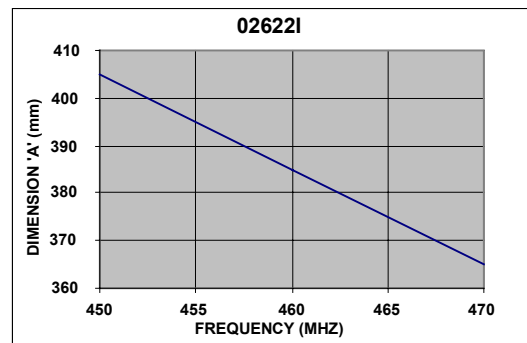
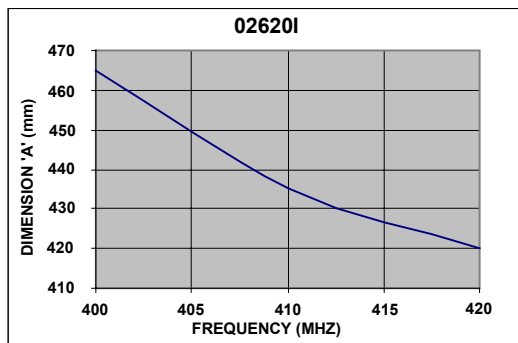
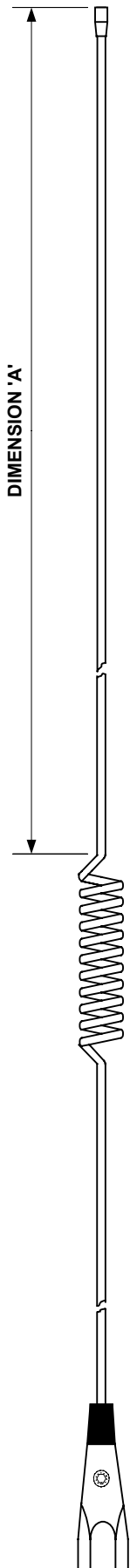


02620I Series Antenna Tuning Instructions

For optimum VSWR and Gain performance in the roof mount applications it is recommended that the 02620I series be tuned to the desired frequency band of operation. The relevant cutting lengths are shown in the graphs below.

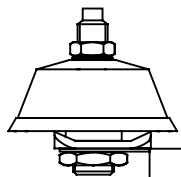
These charts apply to roof Mounting only, for elevated feed applications the antenna must be left at its full length.



Please Note:

A) The best match and pattern performance for these roof mount antennas is achieved when the antenna is located in the centre of the roof.

B) When used on Gutter Mounts the use of Benelec 02904 Ground Plane is recommended, alternatively we recommend the use of Benelec 02632 Elevated feed UHF Hi Gain Antenna.



02740 UHF Standard Base